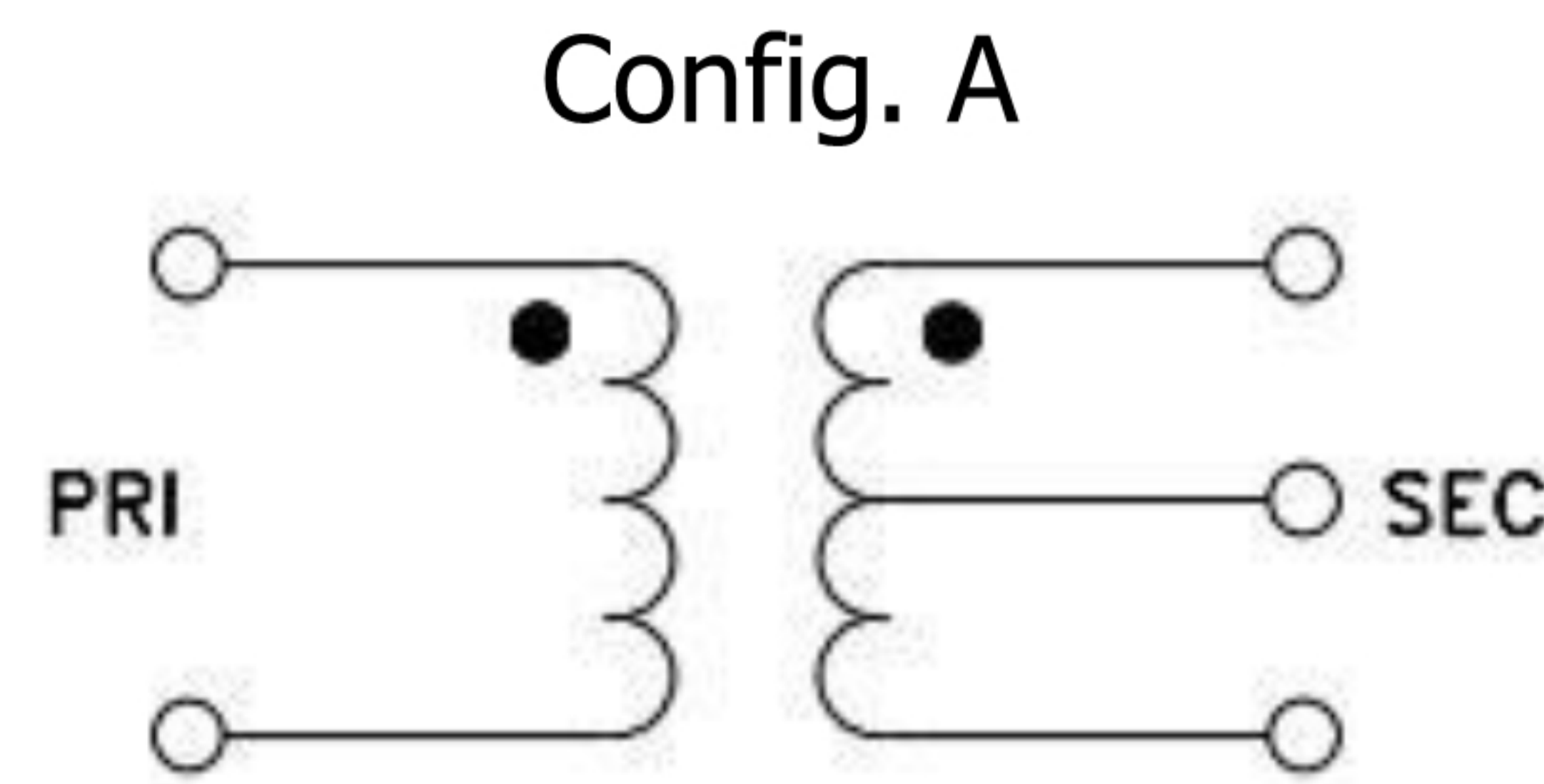


Features

- excellent return loss, 18 dB typ. in 1 dB bandwidth
- excellent amplitude unbalance, 0.2 dB typ. and phase unbalance, 1 deg. typ. in 1dB bandwidth
- aqueous washable

Applications

- impedance matching
- balanced amplifier



50Ω 0.4 to 450 MHz

Transformer Electrical Specifications

| Ω RATIO | FREQUENCY (MHz) | INSERTION LOSS* | | | PHASE UNBALANCE (Deg.) Typ. | | AMPLITUDE UNBALANCE (dB) Typ. | |
|---------|-----------------|-----------------|---------|-------|-----------------------------|------|-------------------------------|------|
| | | 3dB | 2dB | 1dB | 1 dB | 2 dB | 1 dB | 2 dB |
| 2 | 0.4-450 | 0.4-450 | 0.6-400 | 1-200 | 1 | 1 | 0.2 | 0.3 |

* Insertion Loss is referenced to mid-band loss, 0.4 dB typ.

Maximum Ratings

| | |
|---|----------------|
| Operating Temperature | -20°C to 85°C |
| Storage Temperature | -55°C to 100°C |
| RF Power | 0.25W |
| DC Current | 30mA |
| Permanent damage may occur if any of these limits are exceeded. | |

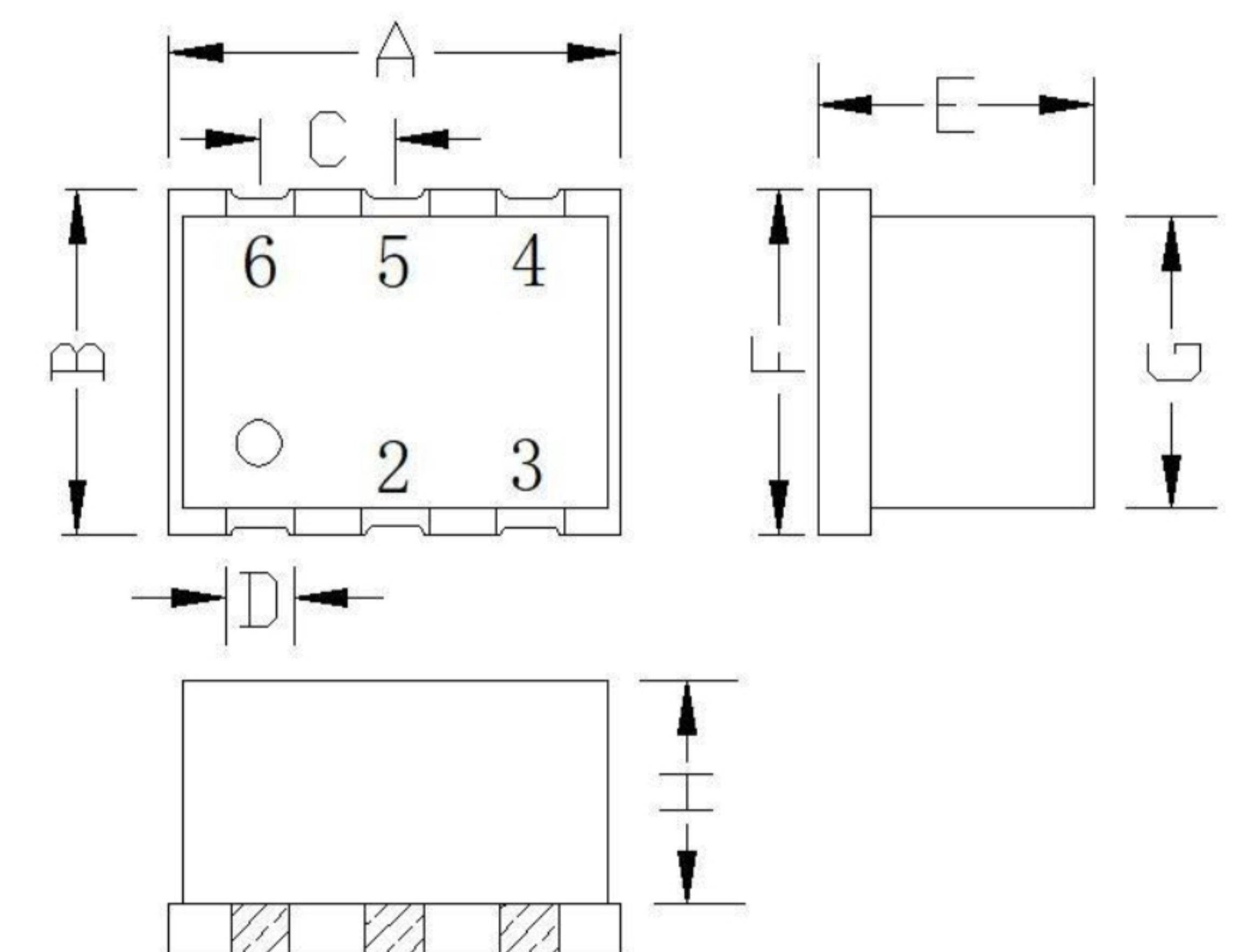
Pin Connections

| | |
|---------------|---|
| PRIMARY DOT | 3 |
| PRIMARY | 1 |
| SECONDARY DOT | 6 |
| SECONDARY | 4 |
| SECONARY CT | 5 |
| NOT USED | 2 |

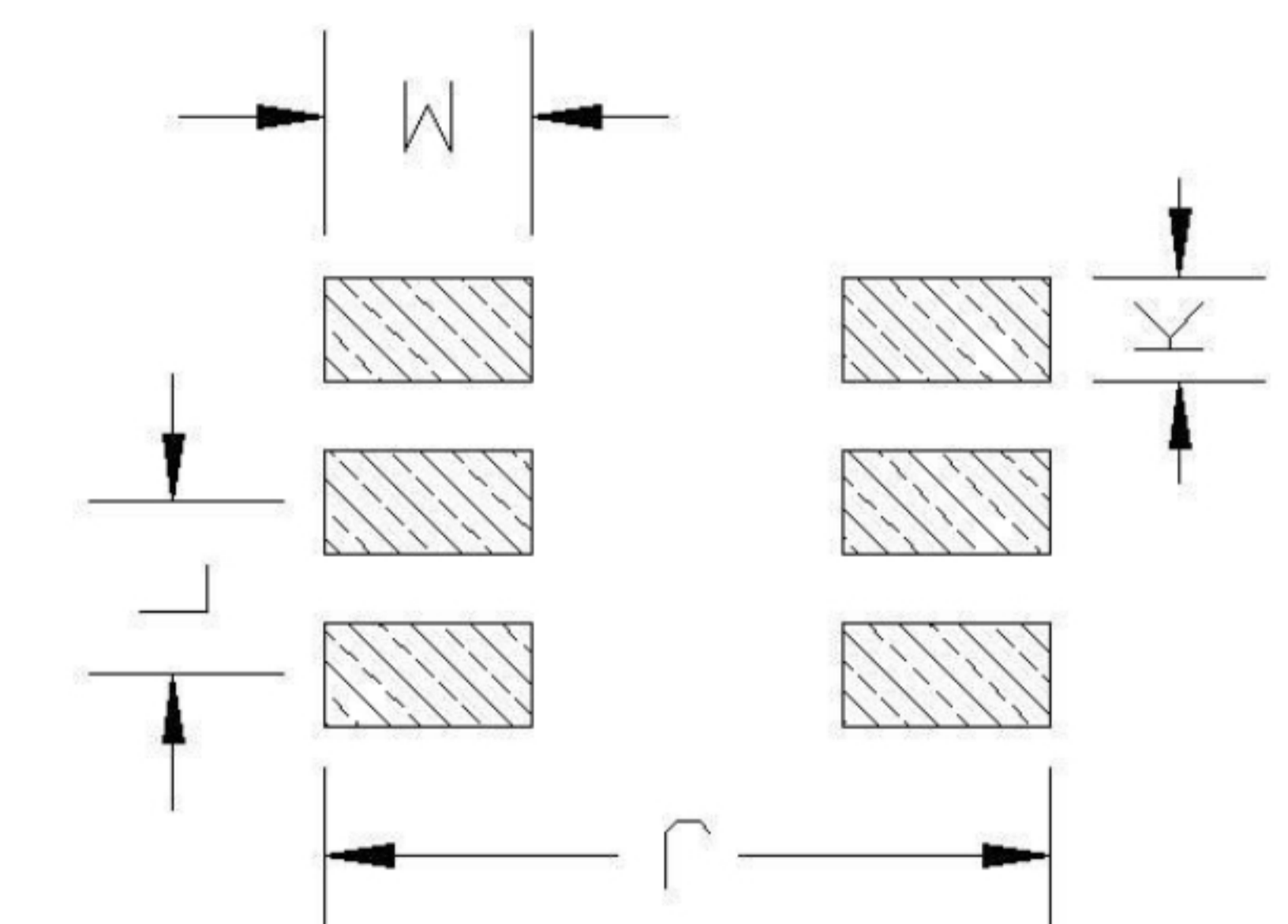
Typical Performance Data

| FREQUENCY (MHz) | INSERTION LOSS (dB) | INPUT R. LOSS (dB) | AMPLITUDE UNBALANCE (dB) | PHASE UNBALANCE (Deg.) |
|-----------------|---------------------|--------------------|--------------------------|------------------------|
| 0.4 | 0.81 | 15.88 | 0.15 | 0.26 |
| 1.0 | 0.58 | 20.61 | 0.20 | 0.31 |
| 5.0 | 0.32 | 28.42 | 0.23 | 0.34 |
| 10.0 | 0.30 | 30.23 | 0.25 | 0.23 |
| 25.0 | 0.34 | 28.47 | 0.26 | 0.17 |
| 50.0 | 0.40 | 24.24 | 0.26 | 0.13 |
| 100.0 | 0.48 | 18.91 | 0.22 | 0.22 |
| 200.0 | 0.69 | 13.40 | 0.08 | 0.14 |
| 400.0 | 1.25 | 8.18 | 0.63 | 1.99 |
| 450.0 | 1.15 | 7.38 | 0.92 | 2.76 |

Outline Drawing



PCB Land Pattern



Suggested Layout, Tolerance to be within ±0.05

| Outline Dimensions: Unit (mm) | | | |
|---------------------------------|------|---|------|
| A | 8.70 | J | 8.00 |
| B | 6.50 | K | 1.50 |
| C | 2.54 | G | 5.50 |
| D | 1.30 | H | 4.30 |
| E | 5.40 | L | 2.54 |
| F | 6.54 | M | 2.00 |
| WT | 3g | | |

