

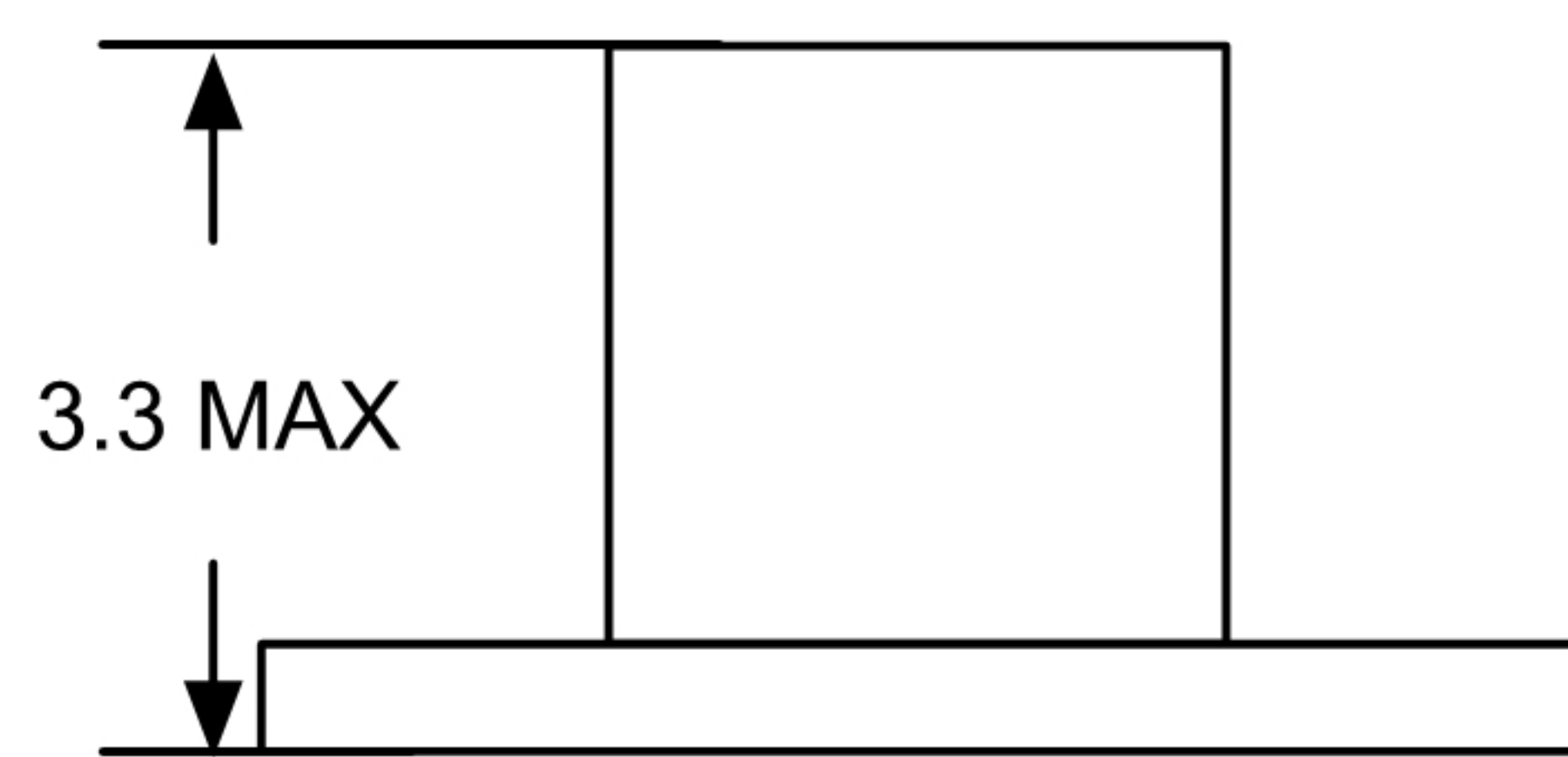
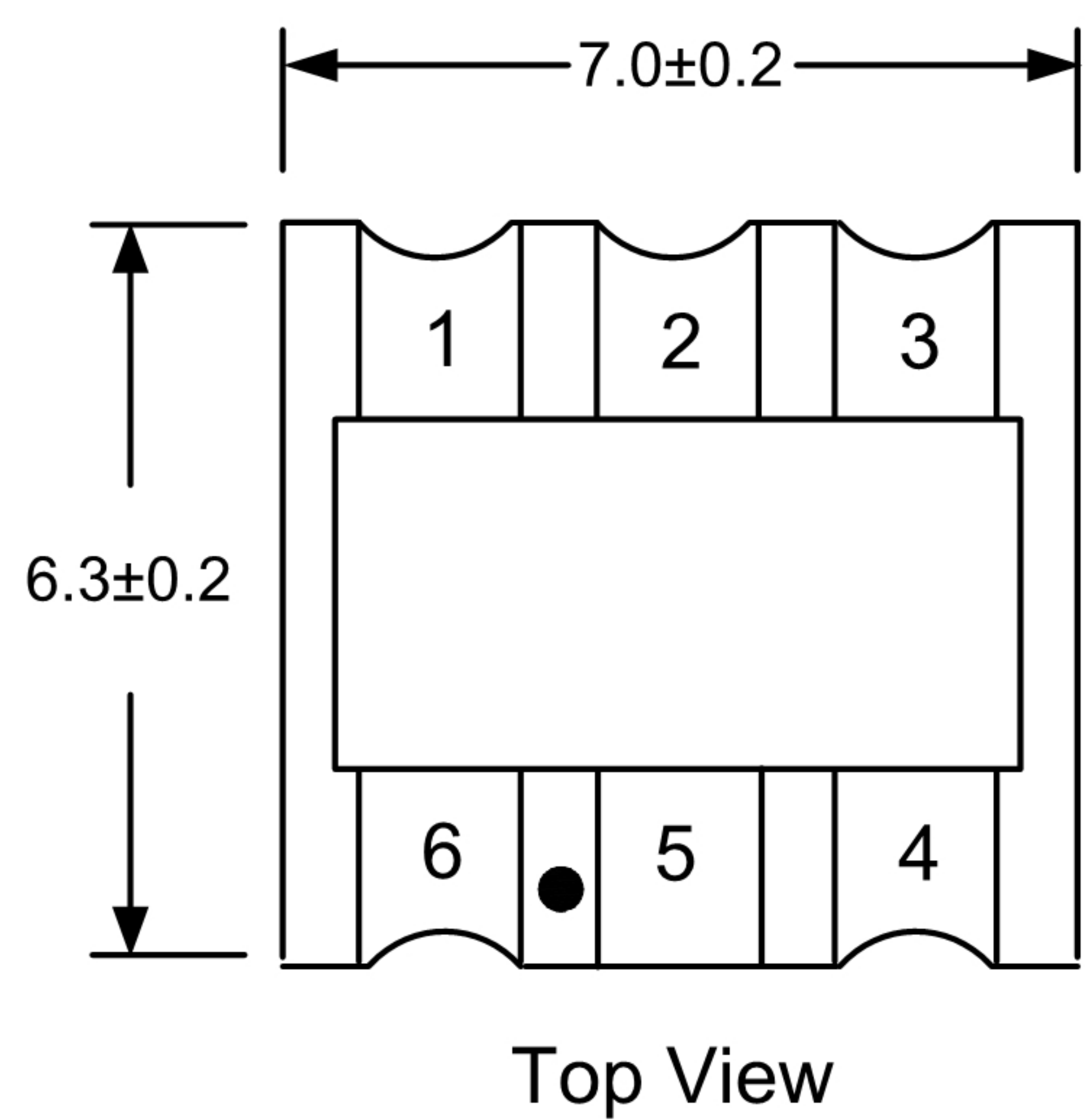
# HBLDTT1-1+

## 射频巴伦变压器



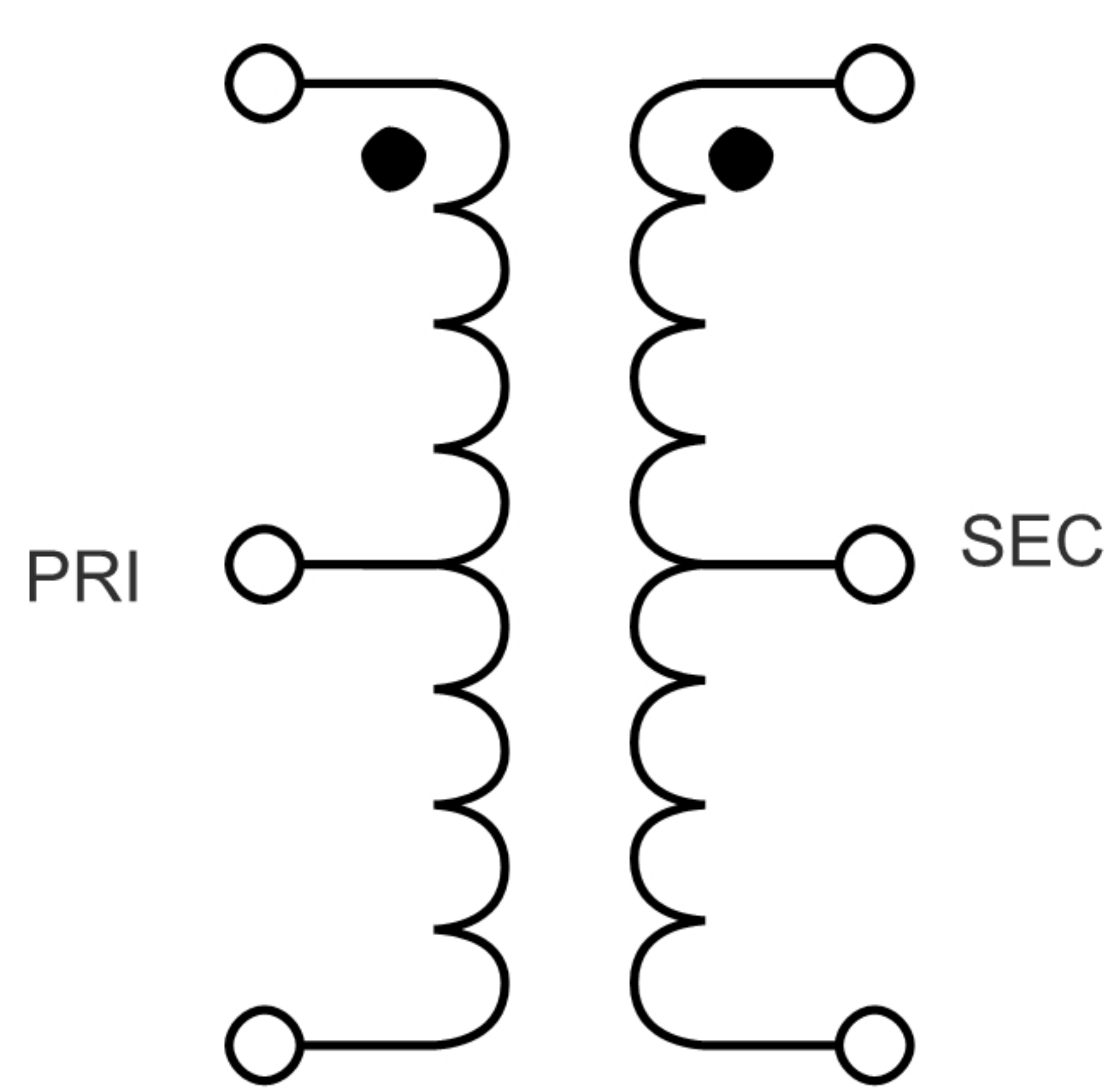
50Ω 1:1 CT Flux Coupled Transformer 0.3-300 MHz

### Outline Drawing(mm)

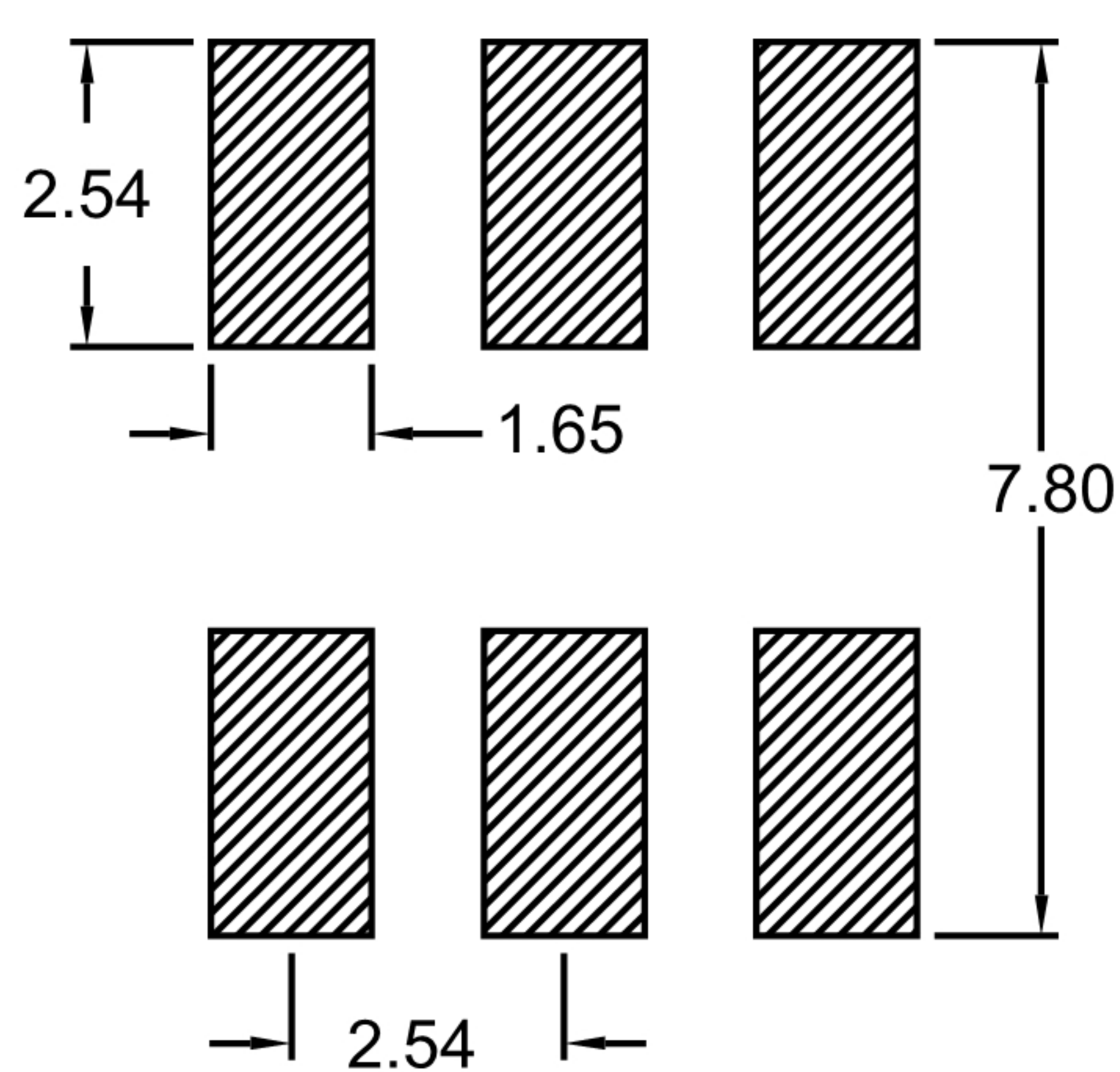


### Electrical structure

Fig F



### Recommended layout(mm)



### Pin Connections

|               |   |
|---------------|---|
| PRIMARY DOT   | 4 |
| PRIMARY       | 6 |
| PRIMARY CT    | 5 |
| SECONDARY DOT | 3 |
| SECONDARY     | 1 |
| SECONDARY CT  | 2 |

### Features

- RF power: 0.50W
- DC current: 100mA
- 260°C Reflow Compatible
- RoHS compliant and lead free
- Operating temperature range: -40 °C to +85 °C
- Storage temperature range: -55 °C to +100 °C

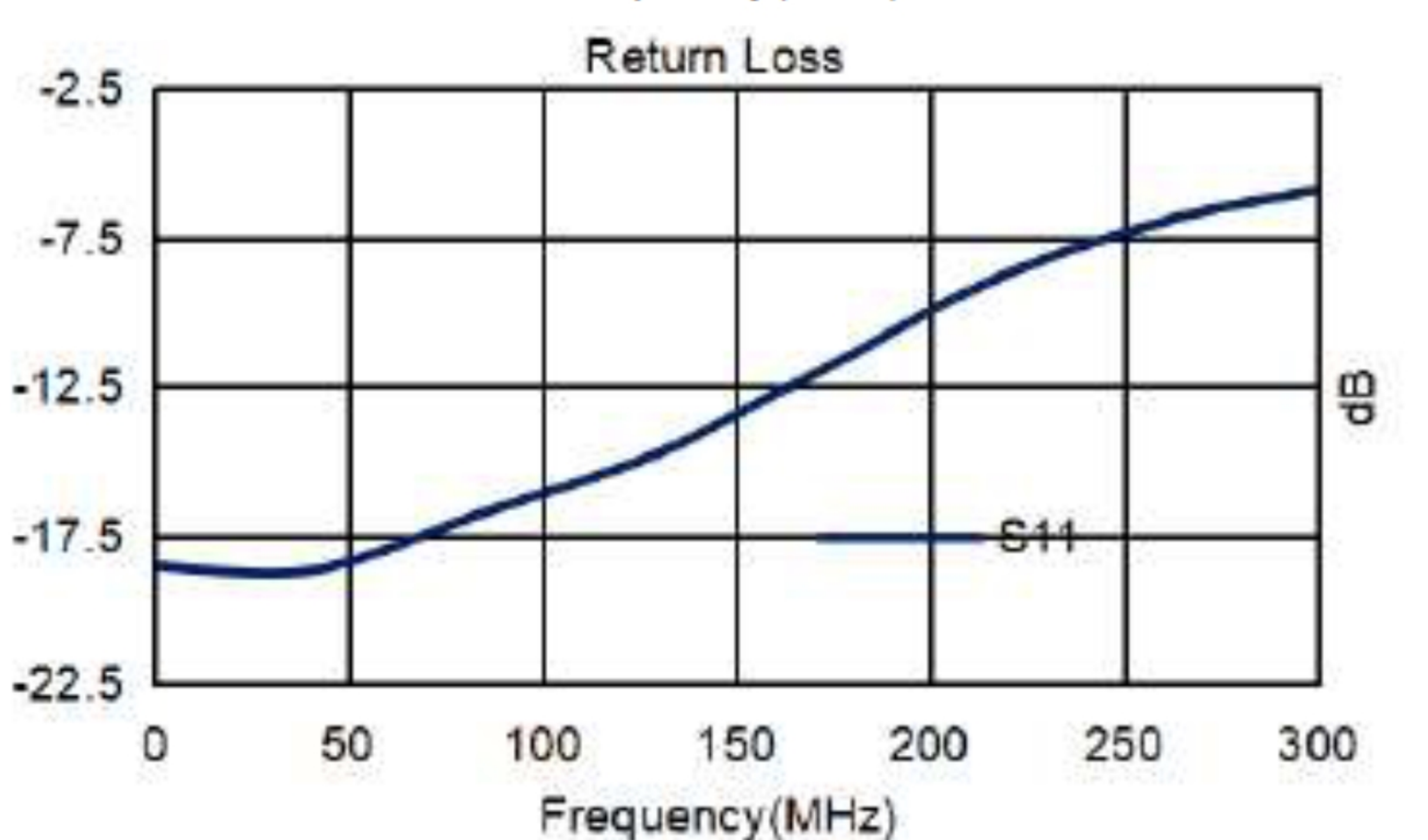
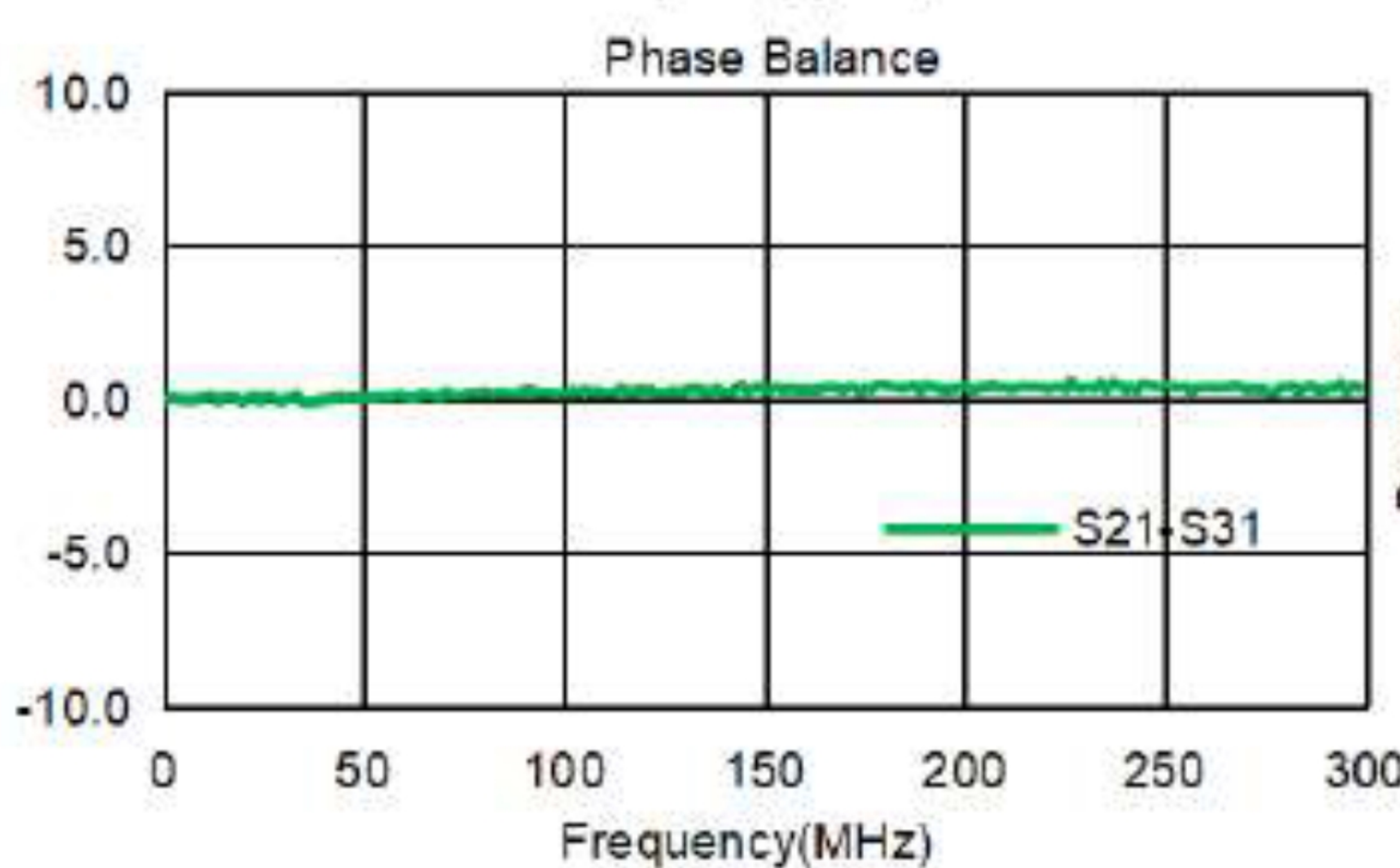
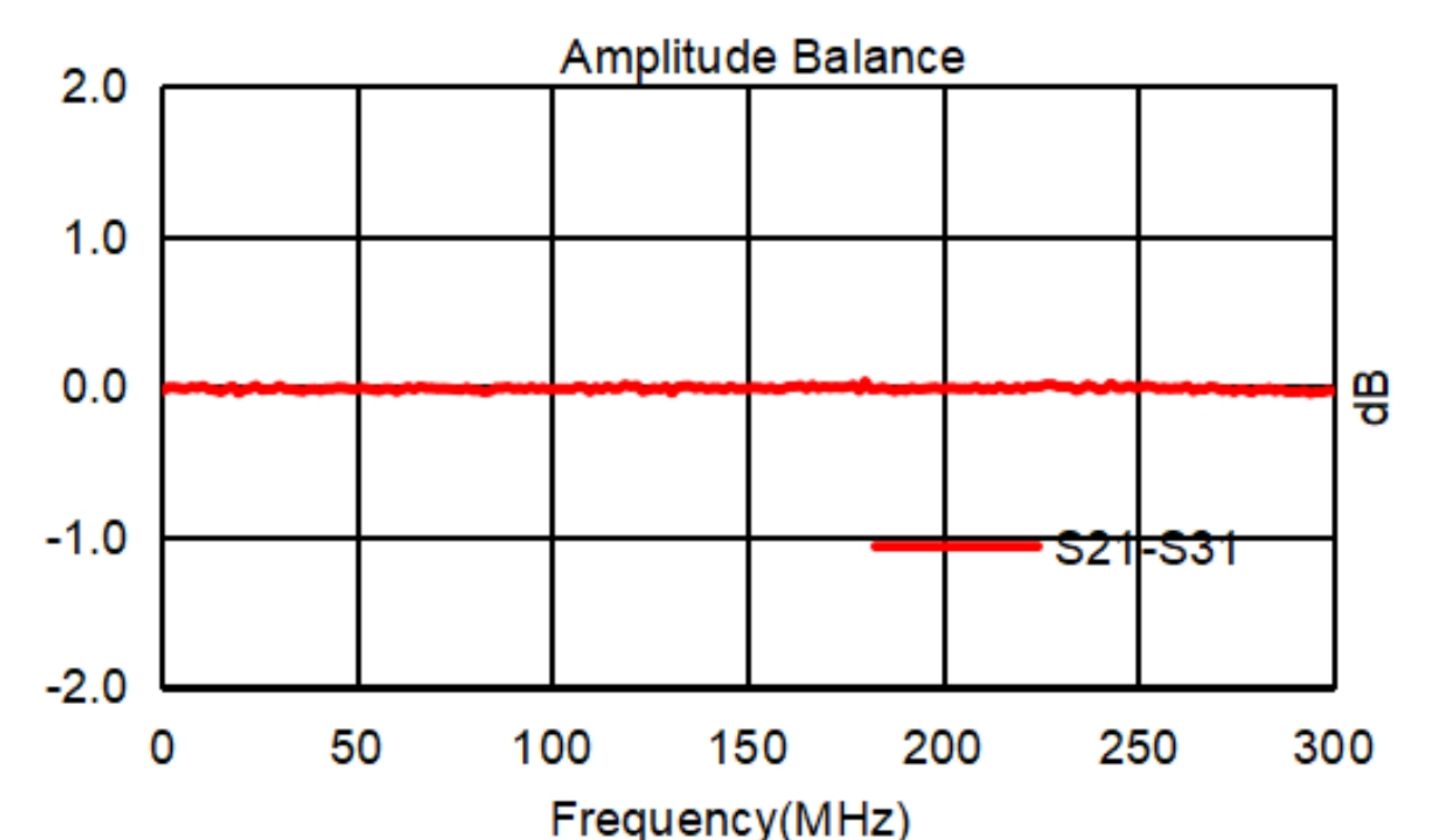
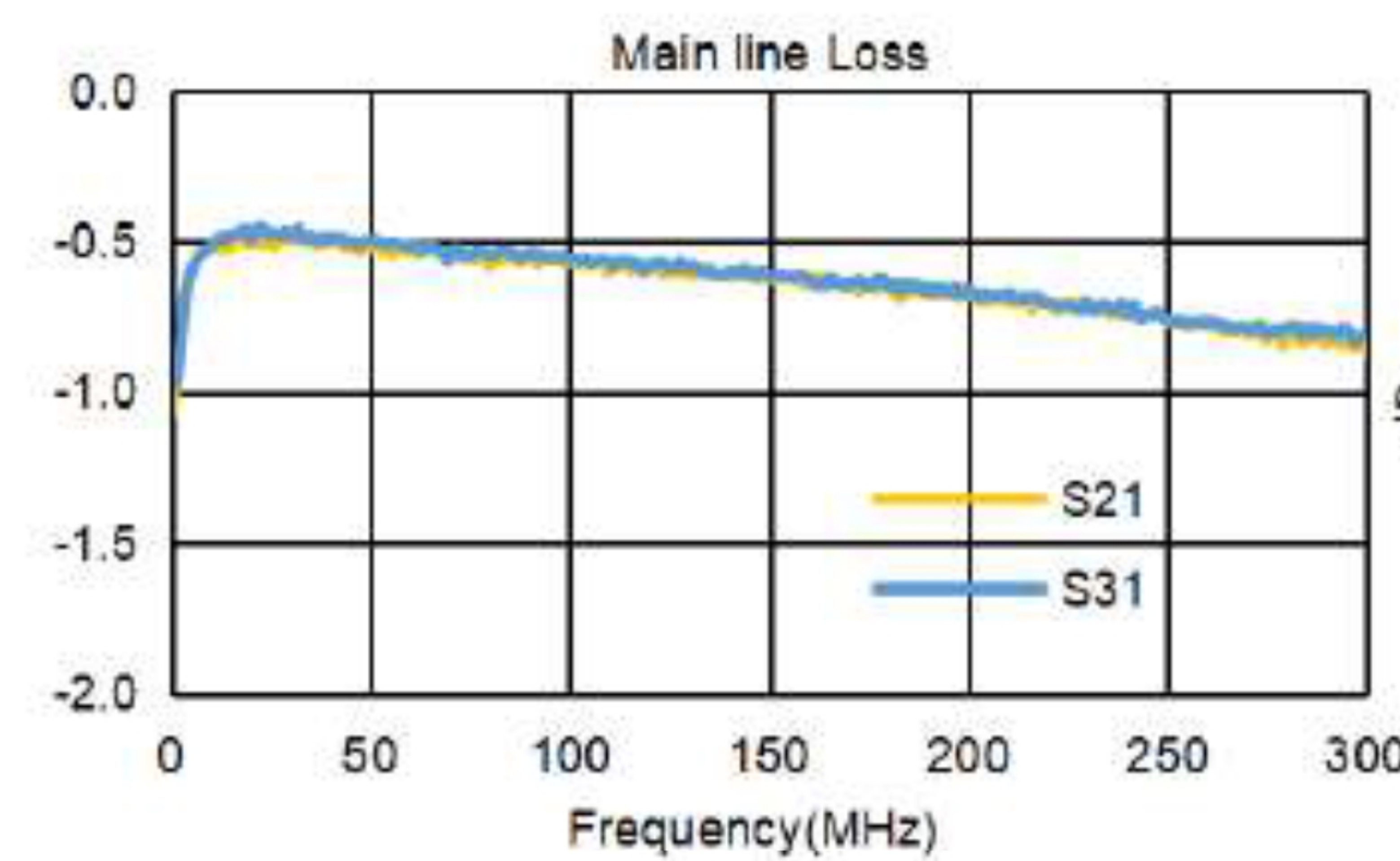
### Applications

- For Motorola Walkie-talkie.
- For Car Streaming Media Rearview Mirror.
- For Broadband and Wireless Communications.
- For Wireless Microphone & Marine Communications.
- For Ideally Suited LTE, Cellular, UMTS, WiFi, WiMAX.
- For Differential Modulator/demodulator and Active Mixers.

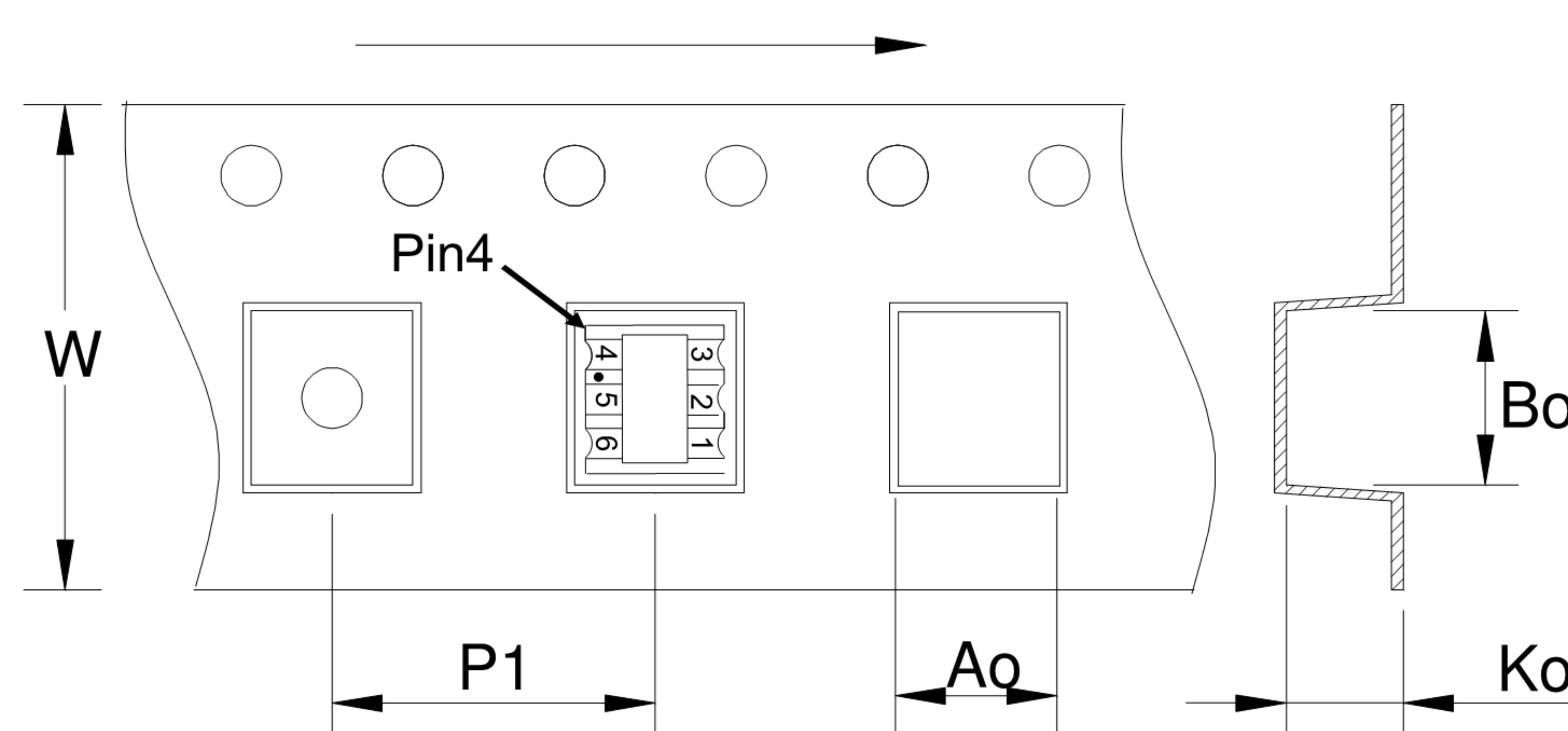


### Electrical Specifications:TA=25 °C, 0dBm, Z0=50Ω

| Parameter               | Test Conditions | Units | Min | Typ  | Max |
|-------------------------|-----------------|-------|-----|------|-----|
| Main line Loss (Pin4-3) | 0.3-300MHz      | dB    | —   | 0.8  | 1.2 |
| Main line Loss (Pin4-1) | 0.3-300MHz      | dB    | —   | 0.8  | 1.2 |
| Amplitude Balance       | 0.3-300MHz      | dB    | 0.0 | 0.1  | 0.8 |
| Phase Balance           | 0.3-300MHz      | °     | 0.0 | 1.0  | 5.0 |
| Input Return Loss(Pin4) | 0.3-300MHz      | dB    | 6.0 | 10.0 | —   |



### Carrier Tape Orientation



### Tape & Reel Information

| Parameter    | Units | Value |
|--------------|-------|-------|
| Qty per reel | PCS   | 1500  |
| Reel Size    | mm    | 330   |
| Tape Width   | mm    | 16.00 |
| Pitch        | mm    | 12.00 |
| Ao           | mm    | 7.20  |
| Bo           | mm    | 8.10  |
| Ko           | mm    | 3.80  |