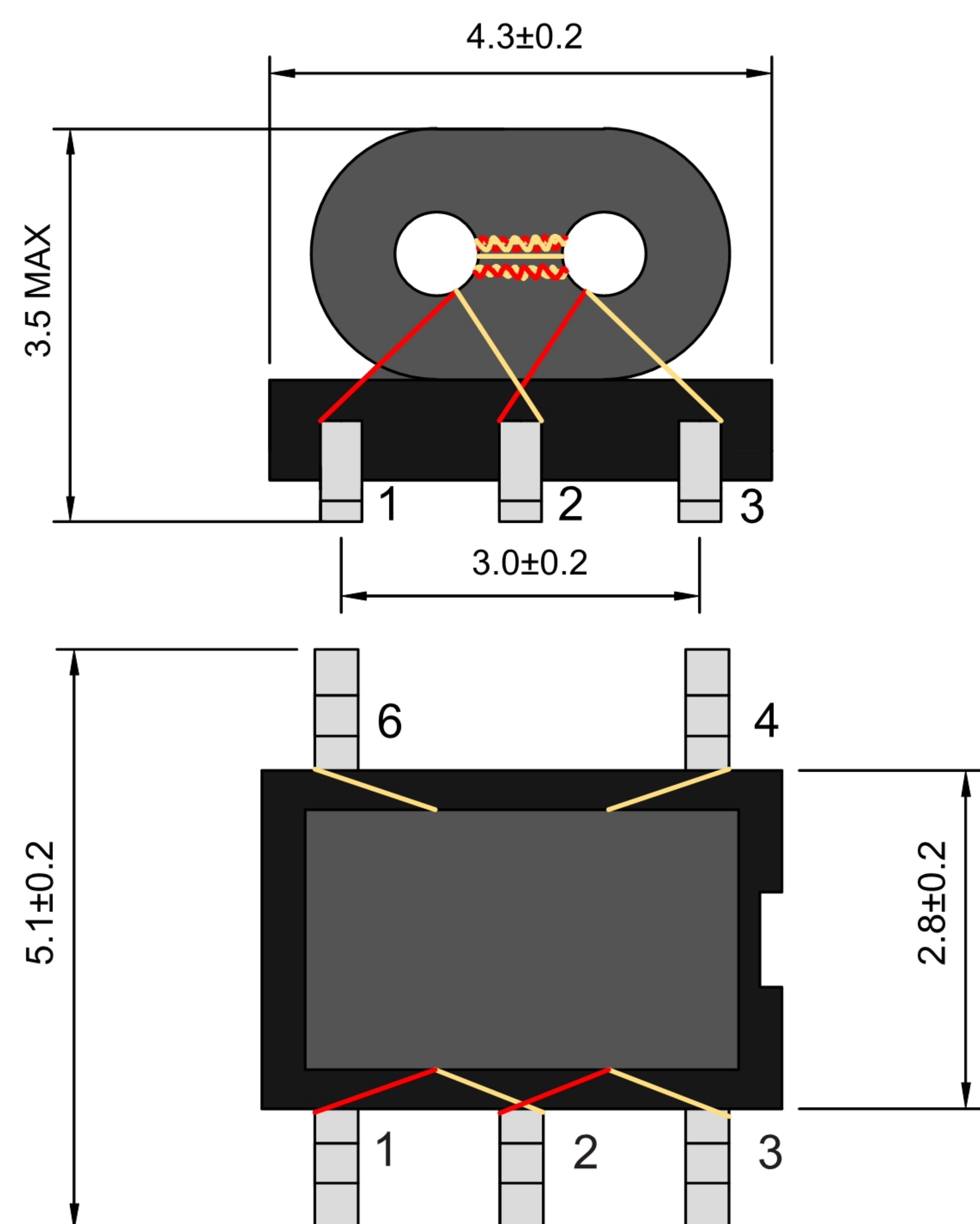
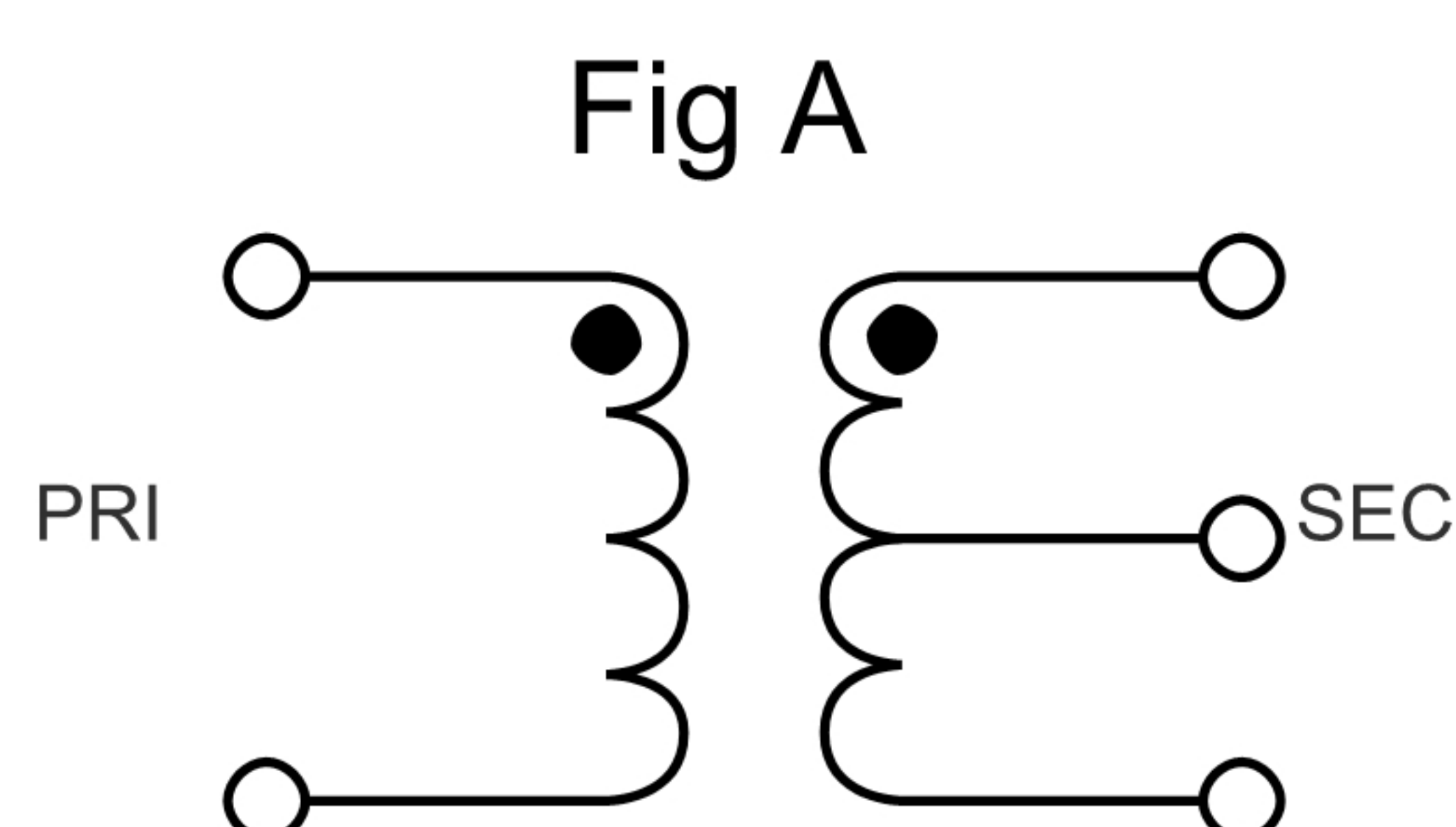




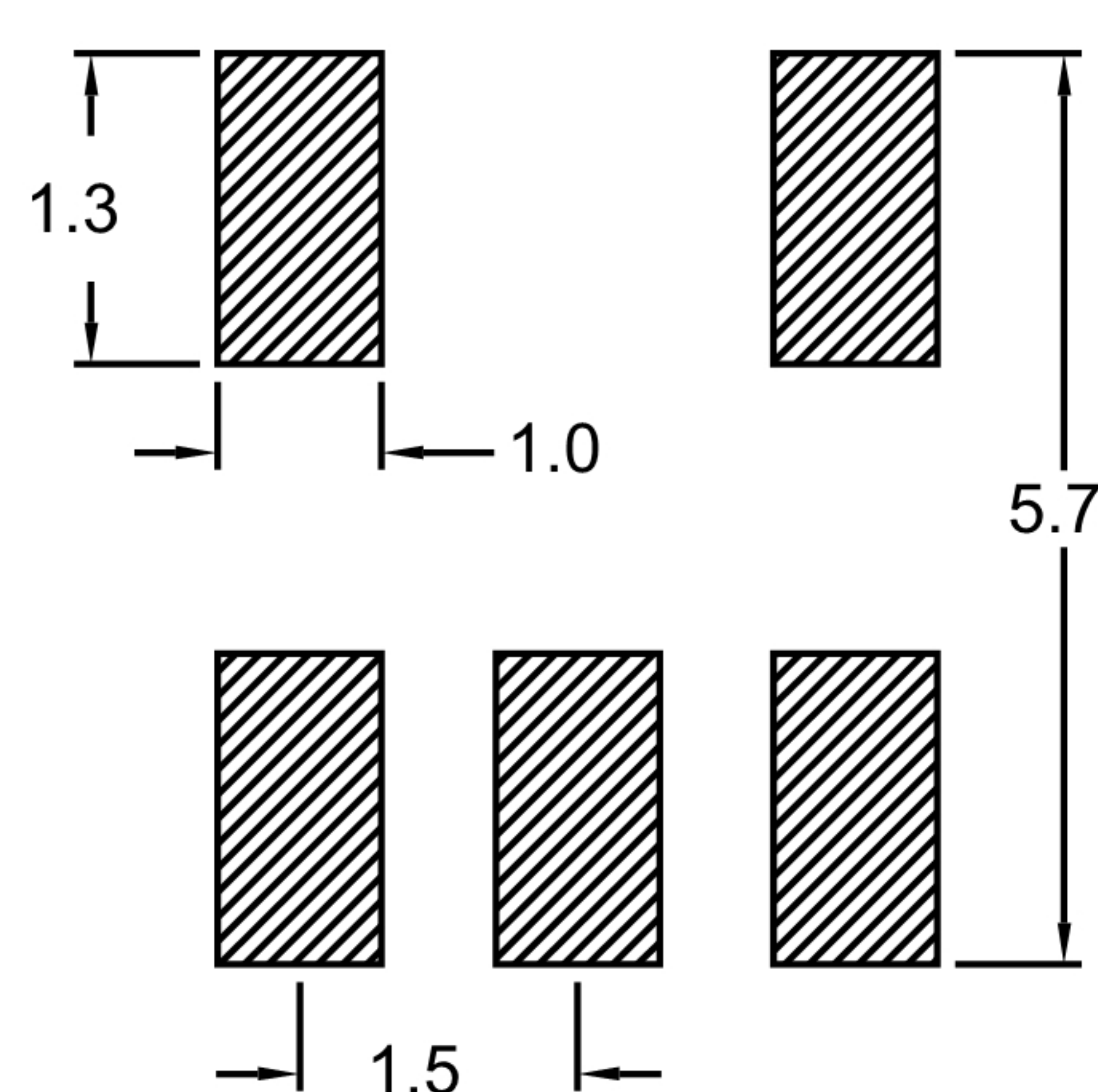
Outline Drawing(mm)



Electrical structure



Recommended layout(mm)



Pin Connections

Input	4
Output 1	3
Output 2	1
Ground	6
Centre tap (Ground)	2

Features

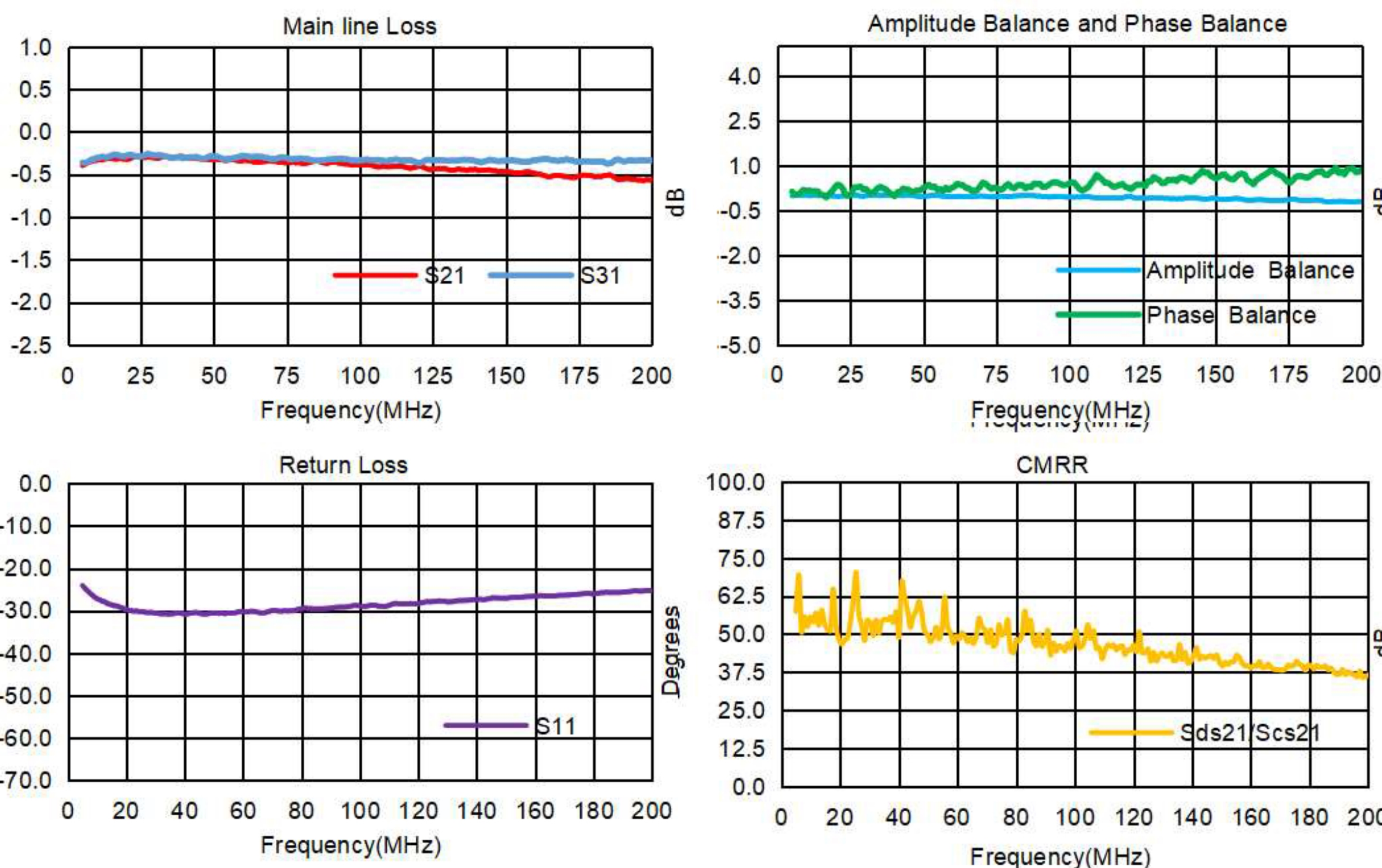
- Input Power: 500mW
- DC Current: 500mA
- 260 °C reflow compatible
- RoHS Compliant and Pb free
- Operating temperature range: -40 °C to +85 °C
- Storage temperature range: -55 °C to +100 °C

Applications

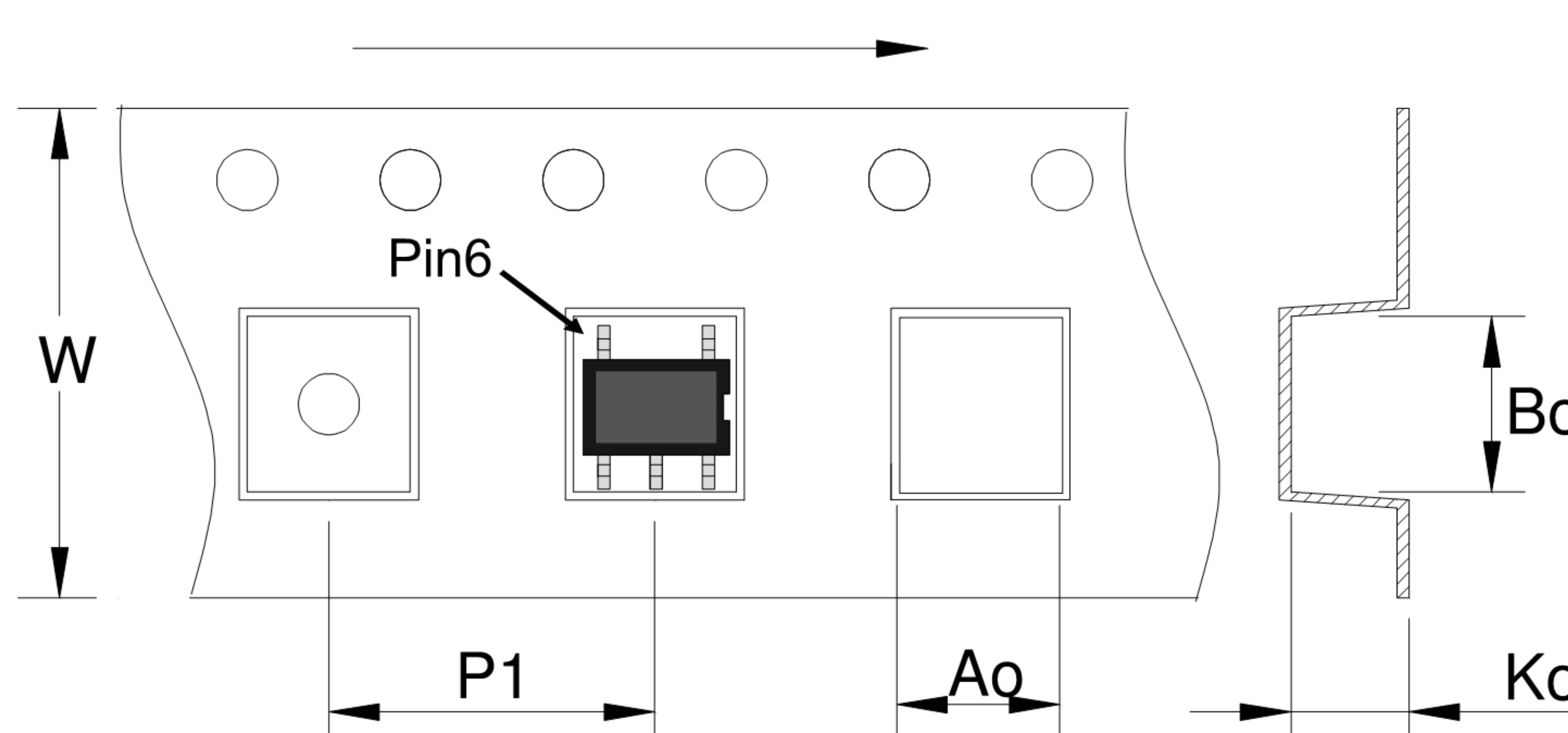
For Docsis 3.0 & 3.1 Cable Modem.
 For Wideband Push-pull Amplifiers.
 For CATV Amplifiers Module & Set top box.
 For CATV Optical Receivers and Amplifiers.
 For VHF/UHF Transmitters and Push-pull Amplifiers.

Electrical Specifications: TA=25 °C, 0dBm, Z0=75Ω

Parameter	Test Conditions	Units	Min	Typ	Max
Main line Loss (Pin4-3)	5-200MHz	dB	—	0.5	1.2
Main line Loss (Pin4-1)	5-200MHz	dB	—	0.4	1.0
Amplitude Balance	5-200MHz	dB	0.0	0.3	1.2
Phase Balance	5-200MHz	°	0.0	2.5	8.0
Input Return Loss(Pin4)	5-200MHz	dB	16.0	25.0	—
CMRR	5-200MHz	dB	25.0	40.0	—



Carrier Tape Orientation



Tape & Reel Information

Parameter	Units	Value
Qty per reel	PCS	2000
Reel Size	mm	330
Tape Width	mm	12.00
Pitch	mm	8.00
Ao	mm	4.50
Bo	mm	5.30
Ko	mm	3.20